

ZEDAS GmbH

Digital order management for rail freight

With the Rail Hub, zedas®cargo - the software solution for logistics management in rail freight transport - has a central interface between the rail company and its customers. The web-based logistics platform offers numerous advantages for both sides. There is a central database, the interaction between the RU and its customers runs partly automatically and the RU customer is directly integrated into the process chain.

Transport Order and Track & Trace
Bookings are electronically recorded, coordinated and approved via the Rail Hub web interface. In addition, the customer has access to a consignment tracking system with estimated time of arrival (ETA) including map display for his deliveries. The customer can use this track and trace data to optimise his logistics chain.

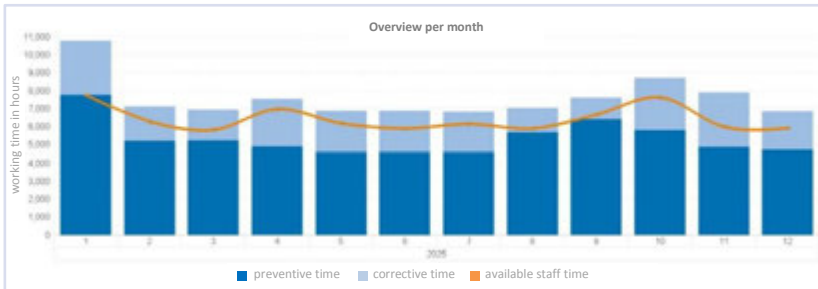
Mobile information portal for employees

Every employee can view and download his or her roster via the informa-

tion portal. In addition, the employee can check his or her time account at any time, which is automatically recorded and updated during his or her work. The route information verification of each employee is also stored here.

Conclusion:

This gives all those involved in transport the opportunity to make transport more effective, increase process transparency and reduce lead times.



Competitive advantages through advanced analytics in maintenance

An efficient maintenance organisation is based on the knowledge of outstanding work tasks and due dates as well as the corresponding personnel requirements.

zedas[®]asset is a suitable instrument when it comes to forecasting the development of personnel and maintenance measures. For the visualised forecasts, personnel availability as well as preventive and corrective maintenance measures are taken into account.

But how can zedas[®]asset forecast disruptions and personnel availability?

The maintenance history is used for this purpose and related to various factors - such as the increasing maintenance requirements of rail vehicles with advancing age. Staff availability is also forecasted by means of historical data, because

staff attendances and absences are stored in zedas[®]asset.

Peaks or staff shortages are thus detected well in advance and can be smoothed out by postponing individual, planned maintenance operations.

Advantages for maintenance planning:

- all due dates have been taken into account,
- Staff requirements are known in long term,
- Peaks are smoothed,
- corrective maintenance is taken into account

Conclusion:

zedas[®]asset provides workshop managers with a reliable and objective forecast based on their own maintenance documentation.

Empty periods and staff shortage can thus be avoided.